

[Product specification list]

	OS Hand burner Magnum OS-HB17000	OS Hand burner OS-HB4500
Product name		
Flame caliber	Φ1.5 in	Φ0.98 in
Calorific value	17,000 kcl/h (19.8 kw)	4,500 kcl/h (5.2 kw)
Burner weight	Approx. 0.88 lbs	Approx. 1.0 lb
One-touch Ignition (Ignition button)	○	○
Automatic fire extinguishing function (Release the ignition button)	×	○
Digest button	○	×
Exclusively gas cartridge for OS Hand burner	△ *3	○
Propane gas cylinder	○	○

*3...You can use a special gas cartridge, but it is not suitable for prolonged use due to the high consumption of gas.

PRODUCT CATALOG

Powerful and safe hand burners

OS Hand burner Series

Industry's first !!

Rooftop Waterproof
Revolution
Robusto

Compatible with both propane gas
and gas cartridges, active in various scenes !



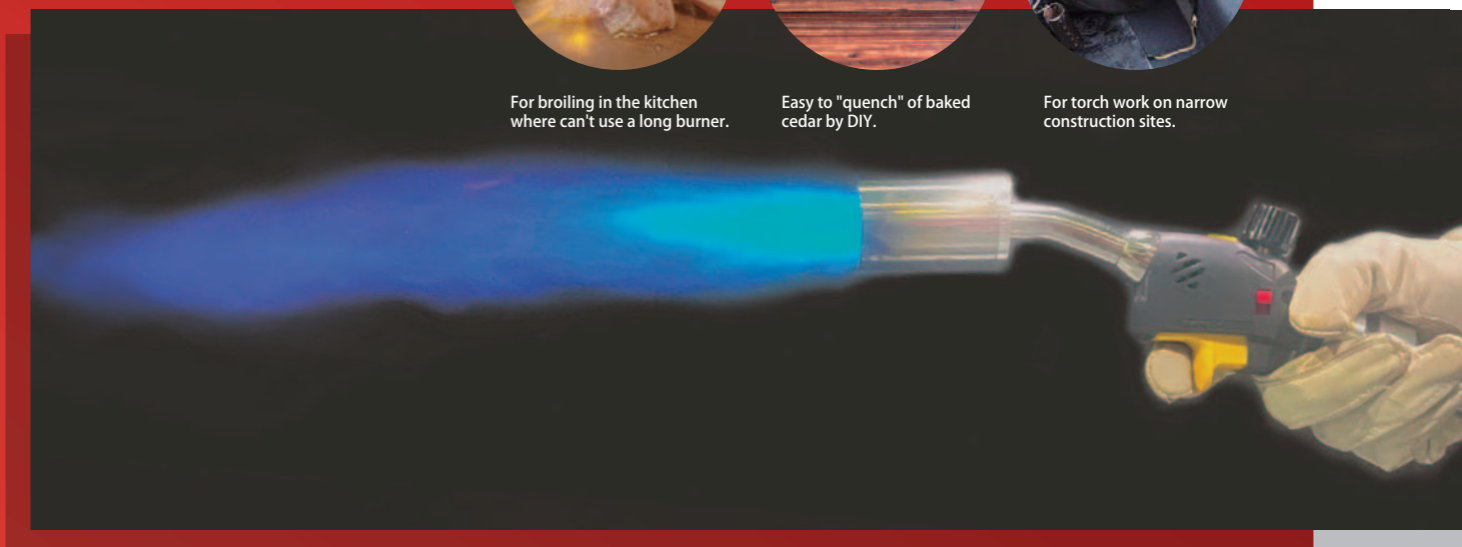
For broiling in the kitchen
where can't use a long burner.



Easy to "quench" of baked
cedar by DIY.



For torch work on narrow
construction sites.



[Head Office]

9F Sanken Kitahama Building, 1-6-10 Hirano-machi, Chuo-ku ,Osaka 541-0046, Japan
Phone: +81-6-6201-2290 Fax: +81-6-6201-2291

[Neyagawa Warehouse]

10-10 Utani-cho, Neyagawa city ,Osaka 572-0856, Japan
Phone: +81-72-821-0150 Fax: +81-72-821-7578

[Saitama Laboratory]

6-10-23 Inari, Souka city ,Saitama 340-0003, Japan



※The contents of this catalog are subject to change without notice.



Robusto Co.,Ltd.



<https://robusto.jp/>

Robusto Co.,Ltd.



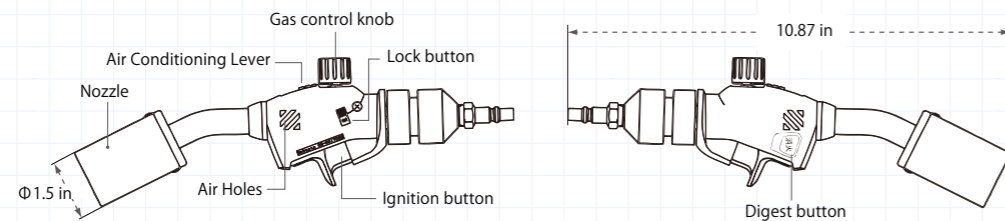
This calorific value of **17,000 kcl/h** exceeds the imagination of a hand burner.

OS Hand burner Magnum (OS-HB17000)

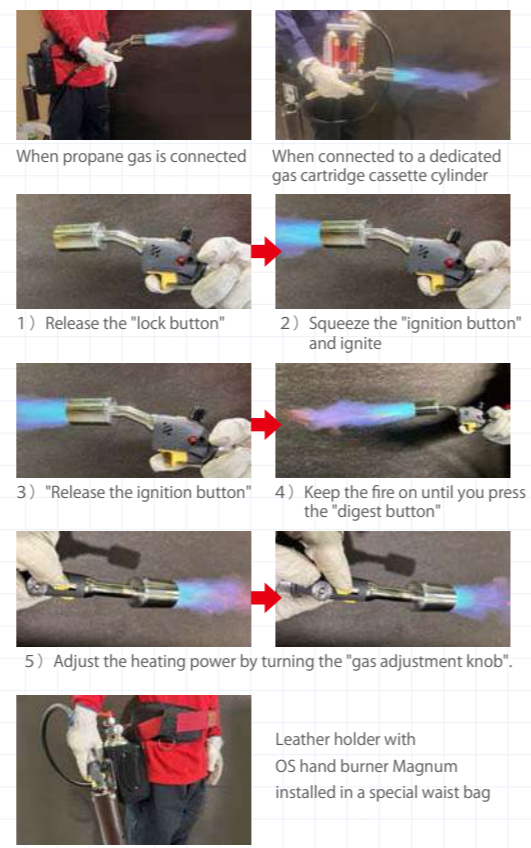
Ignition with a single touch. Even if it is small, the high power feels good!

- Weight: 0.88 lbs Burner body
- Flame temperature: Approx. 2,552°F
- Calorific value: 17,000 kcl/h

Flame caliber : Φ 1.5 in
 Flame temperature : Approx. 2,552 °F
 Calorific value : Approx. 1,7000 kcl/h (19.8 kw)
 Burner weight : 0.88 lbs
 Propane gas hose length : 9.84 ft or 16.40 ft (sold separately)



- Point 01 Weighs 0.88 lbs for high maneuverability* 1**
The burner body weighs only 0.88 lbs and is very compact with a length of 10.87 in. Still, it has a firepower of 17,000 kilocalories per hour, and although it is small in size, it has powerful firepower.
- Point 02 Convenient one-touch ignition function and ignition safety**
The ignition has a two-stage structure in which the gas main valve "gas opening and closing lever" is opened and the "lock button" is released. There will be no inadvertent flames. It is designed to be safe to prevent ignition malfunction. Next, squeeze the "ignition button" and easily ignite with one touch.
- Point 03 Digestion button function**
In response to the requests of many customers, we have adopted a type that can be used while the fire is lit until the "digestion button" is pressed. Torch work can be worked effortlessly without interruption.
- Point 04 Easy heat adjustment**
To adjust the heat power, simply turn the "gas adjustment knob". Squeeze the "gas adjustment knob" and then ignite it, and then release the "gas adjustment knob".
- Point 05 Exclusive leather holder**
The leather holder can be retrofitted to the waist bag or belt with special fittings. When not in use, the burner nozzle can be stored in a leather holder to protect the body from heat. The holder is made of cowhide that is heat-resistant up to about 752°F.



* 1---This weight is only for the burner body.

All types of OS Hand burner Series

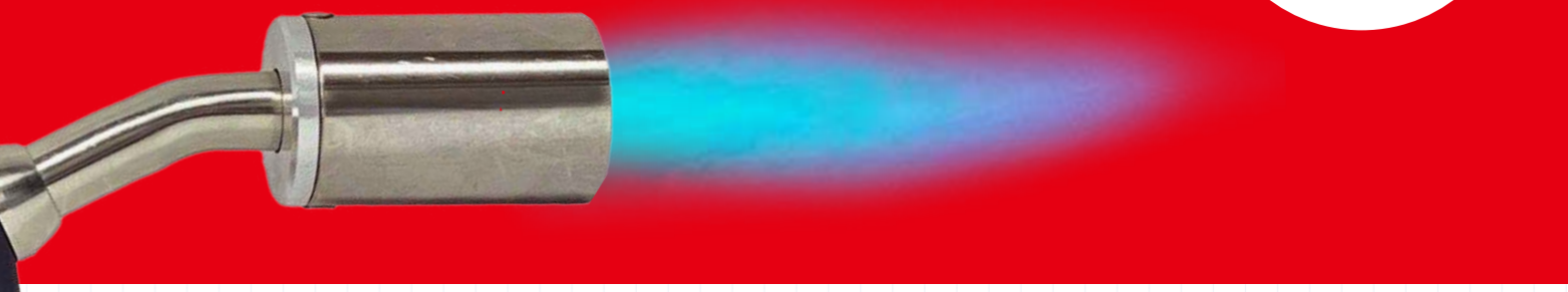
Both propane gas and gas cartridges can be used.

- You can work in an environment where it is difficult to bring in a large burner.
- If it is connected to a large gas cylinder, it is free from the replacement and disposal of gas cartridge cans, making it easy to work.

Industry's first!!

LP GAS OR

Both can be used

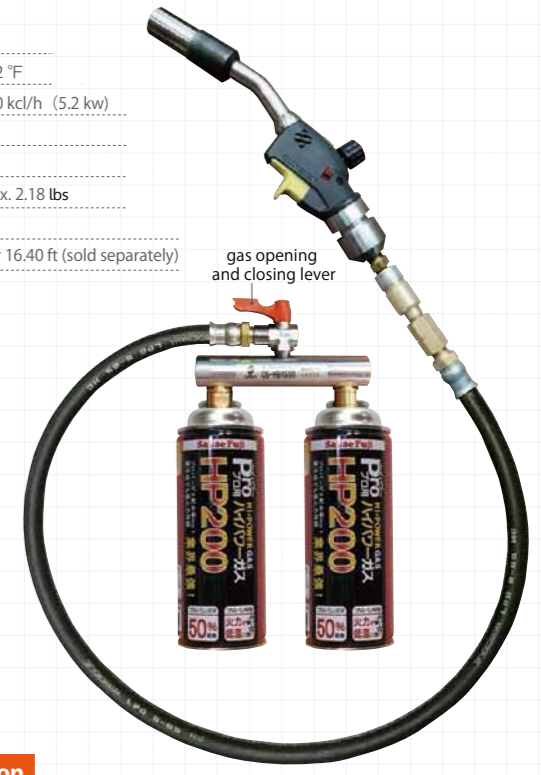


OS Hand burner Magnum (OS-HB4500)

Pursuing more compact and high operability

- Weight: 1.0 lb Burner body
- Flame temperature: Approx. 2,552°F
- Calorific value: 4,500 kcl/h

Flame caliber : Φ 0.98 in
 Flame temperature : Approx. 2,552 °F
 Calorific value : Approx. 4,500 kcl/h (5.2 kw)
 Fuel consumption : 0.825 lbs /h
 Gas cartridge hose length : 3.28 ft
 Gas cartridge hose weight : Approx. 2.18 lbs
 Burner weight : 0.88 lbs
 Propane gas hose length : 9.84 ft or 16.40 ft (sold separately)



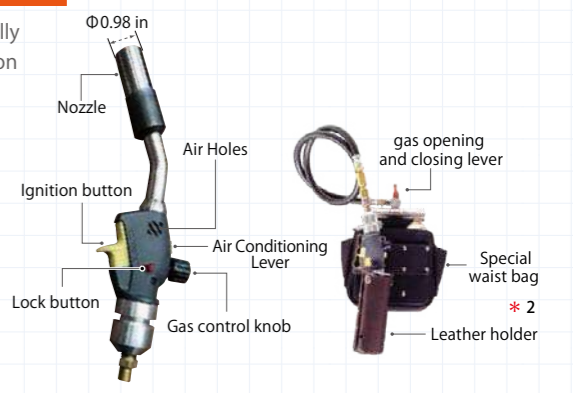
OS hand burner is safe and easy to operate!

Even if you move from place to place, you can move lightly with the OS hand burner set in a special waist bag.

This hand torch burner is suitable for detailed work. By adopting a "screw-in type gas cylinder (gas cartridge)" instead of conventional propane gas, torch work can be easily performed. You can save the trouble and wasted time of filling propane gas with gas. Since it has a small turn, it is useful in work environments where it is difficult to bring in a large burner. It is a dual-purpose burner that can be connected to a large propane gas cylinder as needed.

[Safety points]

- Point 01 Safety with automatic fire extinguishing function**
It is equipped with a safety and security function that automatically extinguishes the fire just by releasing your finger from the "ignition button". Reduces wasted gas consumption.
- Point 02 Even safer A special waist bag is available**
You can set the OS hand burner and gas cartridge in the waist bag, so you can work with good portability. When not in use, the burner nozzle can be stored in a leather holder to protect against heat. The holder is made of cowhide leather that is resistant to heat up to about 752°F.



* 2---The special waist bag and leather holder are sold separately.